

Fall 1999

• Vol. 13

LOUISIANA STATE UNIVERSITY

Professor Emeritus Robert Desbrandes Receives SPWLA Gold Medal for Technical Achievement

Robert Desbrandes, professor emeritus of petroleum engineering, was awarded the 1999 Gold Medal for lifetime achievement by the Society of Professional Well Log Analysts (SPWLA). The award was presented to him in June at the SPWLA symposium in Oslo, Norway.

Desbrandes joined Schlumberger in 1947 and worked in Colombia and Venezuela as a field engineer. In 1952, after suggesting that a density sonde could be built, he came to the Engineering Department of the Schlumberger Corporation in Houston where he designed and built the first commercial wireline formation tester. From 1958 to 1982, he worked at the French Petroleum Institute (IFP) and taught well logging at the French National Petroleum School (ENSPM). In the 1970s, he was president of SAID, the French chapter of SPWLA. He returned to Houston in 1982 as a visiting professor at the University of Houston and in 1984 joined the Petroleum Engineering Department of LSU as an LSU Foundation distinguished professor.

Desbrandes authored 12 books or chapters and 70 articles, and took 36 patents, mostly in the field of logging or testing. His last book is the "Encyclopedia of Well Logging," published by Technip and Gulf Publishing Company.

Since his retirement in 1994, he alternates his time between Paris, France, and Baton Rouge, where he

participates in nuclear science research projects at LSU.



Bruce Bernard Elected 2001 President of SPE

Bruce E. Bernard, B.S. 1969 and member of the Engineering Hall of Distinction 1996, is the 2001 SPE president

Bernard joined Shell Oil Co. E&P in 1968 and held responsibilities in production engineering, field operations, and training activities within the Offshore Production Division from 1978 to 1982; he served as Division Petroleum Engineer, Manager of Development Engineering, and Division Engineering Manager in Shell's Gulf of Mexico businesses. Following various managerial positions at Shell Oil's Central Office and in the Midcontinent Division (1983 - 97), Bernard held leadership roles as Division Production Manager (Alaska) and Head of Production of the California production business. He was elected president of Shell Oil Western E&P Inc. and served as vice president of Shell Oil Co. E&P Technology, president of Pecten Intl. E&P Co., and as a member of the Leadership Team of Shell E&P International Ventures Inc. He retired from Shell in 1997.

John R. Smith Selected 1999 - 2000 SPE Distinguished Lecturer

John Rogers Smith was selected as a Distinguished Lecturer in the Society of Petroleum Engineers' 1999 - 2000 program. The program provides speakers who are experts in their fields to SPE chapters around the world. Smith, who spent 23 years at Amoco before joining LSU, will present up to 24 lectures on drilling in wells deeper than 10,000 feet.

Deep, overpressured wells account for a disproportionate share—about 27 percent in the U.S.—of all drilling costs. Factors contributing to the high cost of deep wells, such as poor bit performance in deep shales, are reviewed in his lecture.

Smith holds a B.S. degree in electrical engineering from the University of Texas and M.S. and Ph.D. degrees in petroleum engineering from LSU. He is the beneficiary of an annual grant funded by the Campanile Charities Endowed Professorship of Offshore Mining and Petroleum



Bernard has participated in a variety of industry and community endeavors. His SPE activities include chair-person of the SPE Distinguished Lecturer Committee, co-chairperson of the Cultural Diversity Task Force, member of the Board of Directors and Executive Committee, and chairperson of the Long Term Governance Task Force.

From the Chair

The department is undergoing major changes. First, there is the name change to *The Craft and Hawkins Department of Petroleum Engineering*. Then, the retirement of Professors Bill Bernard, Bill Holden, and Walter Whitehead and the influx of several new faculty and staff. Five out of our nine faculty joined the department in the last three years, and all but one staff member was here in the 1980s. All these changes are positive signs of rejuvenation and vitality.

The recent events affecting the petroleum industry seem to have no adverse effect on the enrollment. The last two freshmen classes were the largest in the 90s. Companies have been on campus recruiting for summer internships and full-time employment. However, placement is a concern as offers are lagging behind last year at this point in time. Lack of adequate placement may affect student retention in the program. However, optimism reigns in view of the latest jump in oil prices.

The Accreditation Board of Engineering and Technology (ABET) introduced new criteria based on outcome assessment. To comply with the new criteria, which promotes improvement, the department is in the process of putting in place a system that, when fully implemented, will demonstrate our systematic pursuit of excellence and satisfaction of the needs of our constituencies in a dynamic and competitive environment. You, alumni of the department, are one of our key constituencies. In the near future we will be seeking your input as to the appropriateness of the program's mission, goals, and objectives. We will also seek your involvement in assessing the outcomes of the program. We are excited about all the changes awaiting us in the near future and are ready, with the usual help of our alumni and friends, to meet the challenges of a new century!



John B. Brock III Inducted into LSU Hall of Distinction

The LSU Alumni Association inducted seven alumni into its Hall of Distinction at the Lod Cook Alumni Center, Sept. 17, 1999. One of the honorees is John B. Brock III, B.S. 1954.

Brock serves on the board of directors for Ocean Energy Inc., where he is a former chairman. He was president and chief executive officer of United Meridian Corp. and UMC Petroleum Corp.

Brock has received the LSU Foundation President's Award for Lifetime Support at the Trendsetter level and is a member of the LSU Alumni Association Lewis Spencer Graham Society. He also serves on the boards of directors for Southwest Bancorporation of Texas Inc., Southwest Bank of Texas, and Kanaly Trust Co.

Brock is a member of the leadership team helping with the Craft and Hawkins campaign. Highlights of the campaign are listed on page 3.

Staff Spotlight on: Jeanette Wooden



Jeanette Wooden came to the department at the age of 17 as a student worker. Soon after her graduation in December 1991, with a Bachelor of Science degree in art education, she joined the department as secretary and advanced to her current position of coordinator of academic area at the Petroleum Engineering Research and Technology Transfer Laboratory.

Over the past seven years, Jeanette has been a vital force in the department. She works with industry personnel, faculty, staff, and graduate and undergraduate students to implement the ideas and suggestions of her super-

visors. Jeanette helps coordinate industry schools, seminars, and workshops conducted by the department. She has also been extremely helpful to the new faculty in preparing research proposals and publications.

Jeanette is a caring, unselfish, and loyal person. She is a great addition to the department. For those who graduated before she joined the department, she is the "Mary Eloise Haynes" of the 90s!

Jeanette is married to Len Wooden. Together they have a six-year-old daughter, Erica, and a four-year-old son, Derek.

Highlights of the Craft & Hawkins Petroleum Engineering Department Campaign

The Craft and Hawkins Department of Petroleum Engineering Campaign is focused on establishing endowed funds in the LSU Foundation for the benefit of the department. The goal of the endowment was initially set at \$5 million, and all private contributions during the five-year period, 1998 - 2002, count toward the goal. The campaign is focused on four areas: endowed chairs, scholarships, laboratory renovation and maintenance, and unrestricted gifts.

To date, a total of \$3.9 million was pledged to the scholarships, professorships, laboratories, and unrestricted endowment funds. Because of the multi-year nature of the pledges, the actual cash contributions to date amount to \$547,647. We have also received in kind contributions in the form of equipment, services, and computer software from GeoQuest, Merak Projects, and Schlumberger. One of the key elements of the campaign is to endow scholarships that assist students with college costs. Scholarships are an effective means to recruit and retain good students. The alumni scholarship fund was used in fall 1999 to award 33 scholarships to entering freshmen. The average ACT score for the group is 28. Our goal is to establish 40 scholarship endowments at a level of \$50,000 each. The annual award for each is \$2,500. Six of these scholarships are already in place and were awarded at the Advisory Committee dinner held on October 8, 1999.



Mr. David L. Long (center), recipient of an Alumni Scholarship, was presented his award by (left to right) Dr. William Holden, Mr. Bruce Bernard, Mr. Kenneth Scott and Professor Emeritus Murray Hawkins at the Industry Advisory Committee dinner held at the Lod Cook Alumni Center on October 8, 1999.

Two Companies Pledge \$750,000 to Support Laboratories

The foundations of two petroleum companies, Shell and Burlington Resources, pledged, as part of the ongoing campaign, more than \$750,000. Shell Oil Companies Foundation pledged a total of \$502,000. This generous contribution, to be paid over a period of five years starting in 1999, enabled the department to purchase state-of-the-art hardware and software and to defray the cost of a computer network manager, who oversees all departmental computer-related activities.

Burlington Resources Foundation pledged \$250,000, to be paid in install-

ments also over a five-year period. The funds will be used to refurbish and modernize the department's reservoir mechanics laboratory. This unique laboratory is used to teach undergraduate petroleum engineering students the fundamentals of reservoir engineering by conducting experiments using synthetic sandstone models and cores of real reservoir rock. Data collection and analysis will be automated using appropriate hardware and software. This automation will allow the instructor to spend more time on data analysis and interpretation.

McMullans Pledge to Create Professorship

Nell S. and Boyd H. McMullan have pledged funds to establish the Mr. and Mrs. Boyd H. McMullan Professorship in the Craft & Hawkins Department of Petroleum Engineering. Their contributions will be matched by Exxon Education Foundation and are intended to qualify for state matching by the Board of Regents Support Fund.

The McMullans' sons, Jeff and John, received petroleum engineering degrees from LSU. John is an instructor in the department while he works toward his Ph.D. His classmate, Brian Maasson, died shortly after graduating from LSU, and it is in his honor that this professorship has been pledged.



Two Petroleum Engineering Alumni Inducted into the Engineering Hall of Distinction

In 1979 the College of Engineering established the Hall of Distinction to recognize individuals who have made significant contributions to the engineering profession. In the first twenty years of the Hall's history, ten alumni and a faculty of the department of petroleum engineering have been inducted. A plaque on the third floor of the CEBA building lists the names of these eleven distinguished inductees. They are:

1979 J. Howard Ramin, Jr.
BS'34
1983 *Sidney J. Reso, BS'57*
1985 *Murray F. Hawkins,*
Professor Emeritus
1986 *Lodwick M. Cook, BS'55*
1987 *E. J. Langhettee, Jr. BS'49*
1988 *Louis C. Soileau III, BS'41*
1989 *Richard L. O'Shields,*
MS'51
1991 *Harry J. Longwell, BS'63*
1993 *Donald W. Clayton, BS'59*
Elton J. Yates, BS'57
1996 *Bruce E. Bernard, BS'69*

Charles V. Cusimano and Patrick F. Taylor, two achievers in petroleum engineering, were added in April 1999.

Charles V. Cusimano, a native of New Orleans, graduated from Louisiana State University with a B.S. in petroleum engineering in 1951. He attended LSU on a football scholarship, lettered for four years, and played in the Cotton Bowl in 1946 and the Sugar Bowl in 1950. Cusimano also studied law at Loyola University in New Orleans and did postgraduate work in geology at the University of Oklahoma.

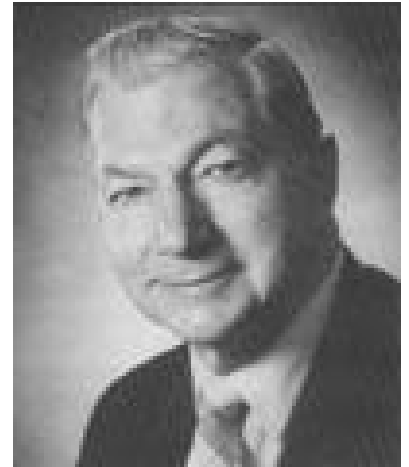
Cusimano began his career in the oil industry as a junior engineer with independent oil operators in New Orleans.

Following a stint in the U.S. Marine Corps during the Korean War, Cusimano was recruited by New Orleans Public Service as development gas engineer to implement the city's transition to dry natural gas. This process entailed designing new lines for the entire city.

Cusimano served as a consultant for various companies in the oil industry from 1957 - 62. His responsibilities encompassed all facets of exploration and production, including purchasing of leases, defining rig locations, handling rig contracts, and installing production facilities. It was during this time that Cusimano innovated the setting of tank batteries on barges for loading and unloading production.

In 1962 Cusimano formed the Energy Corporation of America, which merged with Equitable Petroleum Company in 1973. His company was one of the first to specialize in buying distressed properties, reworking old wells, and drilling new wells to improve production. By the time Cusimano sold his corporation to Wichita River Oil Company and retired in 1992, he had drilled nearly 600 wells in Louisiana, Texas, Oklahoma, Mississippi, Alabama, California, Colorado, North Dakota, Kentucky, West Virginia, and New York.

Cusimano has been a member of the LSU Board of Supervisors since 1974, and served as chairman from 1995 - 96. During his tenure, Cusimano was instrumental in the West Side Expansion of Tiger Stadium as well as the proposed con-



Charles V. Cusimano

struction of Tiger Stadium East Side boxes. He actively supported the consolidation of several departments and divisions into the Center for Coastal, Energy, and Environmental Resources. Cusimano also endorsed and aggressively pursued privatized student housing at the University of New Orleans and helped establish religious centers on all of the LSU campuses.

Cusimano is a member of SPE, IPAA, API, New Orleans Geological Society, Optimist Club, Sierra Club, and Petroleum Club. He also serves on the NOKIA Sugar Bowl Committee and is a former Southeastern Conference football official.

Charles Cusimano is married to the former Violet Taranto. They have one son, Judge Charles "Chuck" Cusimano; three daughters, Lisa Brewer, Jan Simon, and Cathy Daigle; and 17 grandchildren.



Patrick F. Taylor

Patrick F. Taylor, born in Beaumont, Texas, earned his bachelor's degree in petroleum engineering in 1959 from LSU. He is chairman, president, and CEO of Taylor Energy Company, an independent exploration and production company with offices in New Orleans and Houston.

Upon graduation Taylor was employed by John Mecom, Sr., an independent Houston oilman. In 1967 Taylor formed his own consulting engineering company and began acquiring oil and gas properties. In 1974 Taylor and Mecom formed Circle Bar Drilling Company and adapted inshore technology in drilling offshore in relatively shallow water in the Gulf.

Taylor sold Circle Bar Drilling in 1979 and founded Taylor Energy Company. The company is the only individually owned company operating exclusively in the federal waters offshore in the Gulf of Mexico.

In 1983 Taylor was nominated to serve on LSU's Board of Supervisors and served through 1986. From 1987 to the present Taylor has been on the University of New Orleans Foundation Board of Directors. During this same period and into the early 1990s, Taylor also served on the boards of the Louisiana Maritime Museum, the U.S. Coast Guard Foundation, and the Louisiana Association of Business and Industry. He was also the finance chairman for several events and organizations, including the New Orleans Commission on the Bicentennial of the Constitution and the 1988 Republican National Convention.

In 1985 Taylor was honored nationally with the Horatio Alger award. That year he also established the Patrick F. Taylor Foundation, a private, not-for-profit education foundation which supports philanthropic, community, and educational endeavors.

This year Taylor was named "one of New Orleans' Top Ten Businessmen" during the 15th anniversary broadcast of Informed Sources on WYES-TV. New Orleans Mayor Marc Morial honored him in 1998 with the "Mayor's Medal of Honor" for his wide range of community services, from the renovation of properties in the Lee Circle neighborhood and his devotion to the New Orleans Police Department, to his restoration of several of the city's historic military statues. Taylor's awards and honors are numerous.

An avid supporter and loyal fan of LSU, in 1989 Taylor endowed a Basic Sciences Chair in the field of environmental sciences.

LSU awarded Taylor its Doctor of Science and Humane Letters degree in 1990. In 1993, he was awarded the Society of Petroleum Engineers' Public Service Award.

In 1988 Taylor offered a college education to a group of academically underachieving students at Livingston Middle School in New Orleans. Within the next 18 months, he would convince the Louisiana legislature to pass and Governor Roemer to sign into law his now well-known "Taylor Plan." In September 1989 Taylor appeared with Mike Wallace on "60 Minutes," and the national attention that resulted caused him to travel to more than half of the states in the Union, convincing more than a dozen states over the next few years to adopt Taylor Plan laws.

Today the Louisiana Taylor Plan has evolved into the wildly popular TOPS (Tuition Assistance Program for Students) program and LSU "tops" the list of Louisiana colleges and universities with the most recipients: more than 7,000 students. When LSU's newest admission standards go into effect for the high-school graduates of 2000, the entire freshmen class will be able to attend LSU tuition-free thanks to Pat Taylor and his desire to see that academically qualified students were not prevented from attending college because of their inability to pay for an education. Patrick Taylor and his wife of 35 years, the former Phyllis Miller, founded the 4,000-acre Circle Bar Ranch in Foxworth, Mississippi, where they operate a commercial venison business and conduct research into wildlife management.

New Faces for a New Millennium



M. Janet Dugas, Clerk Chief
Janet joined the department in 1997. She is responsible for developing and maintaining our Web site. She assists our undergraduate and graduate advisors with the recruitment of students into the department. She supervises student workers, and maintains undergraduate and graduate students' records.



John M. Griffin, Instructor
John joined the department in January. He received his Ph.D. in petroleum engineering from LSU in 1991, M.S. in mineral engineering from the University of Alabama in 1978, and B.S. in geology from Emory University in 1975. He teaches petroleum economics and several laboratory courses.



Ernie W. Loftice, Research Specialist
Ernie also joined our department in January of this year, overseeing the Petroleum Engineering Research and Technology Transfer Laboratory. He received his B.S. in education from The University of Southwestern Louisiana in 1981 and A.S. in life sciences and technology from Nicholls State University in 1976.



John H. McMullan, Instructor
John's baaaaaaack!!! In January of 1998 John rejoined the department after a 15+ year stint in industry. He received his B.S. and M.S. in petroleum engineering from LSU in 1976 and 1979, respectively. Along with his teaching assignments, John is pursuing a Ph.D. in the department. He teaches reservoir engineering-related courses.



Dandina N. Rao, Assistant Professor
Dan's another new hire in January of 1999. He received his B. Tech. in chemical engineering from Osmania University, India, in 1974, M.S. in chemical engineering from the University of Saskatchewan, Canada, in 1977, and Ph.D. in chemical and petroleum engineering from the University of Calgary, Canada, in 1983. Dan teaches and conducts research in the area of enhanced oil recovery.



M. "Randy" Rasti, Computer Manager
In August of 1996 Randy joined our department as a Teaching Associate. With his vast expertise in networking and computers, he became the designated computer manager this past August. Randy received his B.S. in petroleum engineering at LSU in 1971.



Ephim I. Shirman, Research Associate
Ephim joined our department in November of 1998 after receiving his Ph.D. in petroleum engineering at LSU. His M.S. in petroleum engineering was also from LSU (1995). Ephim also received advanced degrees in mechanical engineering from Moscow Oil and Gas Institute. His area of research is downhole water sink technology.



John R. Smith, Assistant Professor
In August of 1998 John joined the department after 23 years in industry. He received his B.S. in electrical engineering from the University of Texas at Austin in 1971, M.S. in petroleum engineering from LSU in 1995, and Ph.D. in petroleum engineering from LSU in 1998. His areas of expertise are drilling and well control.



Pavel Syngaevsky, Research Associate
Pavel joined the department in May of this year after a 12-year career in industry. He received his M.S. in mining engineering in 1987 and Ph.D. in geology in 1994 from the Academy of Oil and Gas in Moscow. His area of expertise is petrophysics.



Chris D. White, Assistant Professor
Chris joined our department in May of this year from the Bureau of Economic Geology, Austin, Texas. He received his B.S. with special distinction in petroleum engineering from the University of Oklahoma in 1981, M.S. and Ph.D. in petroleum engineering from Stanford University in 1983 and 1987, respectively. His area of expertise is reservoir characterization.

Alumni Bits

1930s

Clarence P. Boutte ('32) passed away in December of 1997 in LaPlace, Louisiana.

Our condolences to the family of **Charles H. Clawson** ('35) who passed away in September of 1997 in Shreveport, Louisiana.

1940s

Russell W. Holman ('40) is self-employed, residing in Dallas, Texas.

Pipeline extends its condolences to the family of **Joseph W. Hecker** ('41) who died April 7, 1997.

C.O. Magee, Sr. ('41) retired from Exxon after 24 years. He also retired from Mapor USAR and is semi-retired from real estate in Alexandria, Louisiana.

Pipeline extends its condolences to the family of **John O'Connor** ('41) upon his death.

Robert G. Bryan ('42) passed away on May 16, 1997.

Adolph J. Maier, Jr. ('47) passed away on October 30, 1997.

1950s

Glen Drewett ('53) is president of Marine Rubber & Urethane, Inc. in Humble, Texas.

John Brock III ('54) is chairman of the board of Ocean Energy, Inc. in Houston, Texas. (See related story on page 2)

Jerry Crocker ('56) is owner of Rush-Andrus Engineering in Edmond, Oklahoma

Elton G. Yates ('57) passed away on March 18, 1999. Our condolences to his family.

M.W. Braden, Jr. (B.S. '58; M.S. '65) is president of Production Enhancement Partners, Inc. in Fort Worth, Texas.

Bobby C. Holmes ('59) passed away on March 12, 1998, in Houston, Texas..

Edward Amar, Jr. ('64) is the owner of Amar Oil in Hammond, Louisiana.

Thomas H. Hutto, Jr. ('65) is drilling manager for Texaco China BV.

Terry Teekell ('65) is vice president and general manager of Parish Water Company in Baton Rouge, Louisiana.

Don Ray George ('68) is president and CEO of Don Ray George & Associates in Austin, Texas. He has been in business for 22 years, since leaving Chevron January 1976. He has been married to Alice "Tippy" (Stone) for 30+ years.

1970s

A. R. Alameddine ('71) is vice president of business development domestic division of Pioneer Natural Resources in Irving, Texas.

Robert Bradford (B.S. '71; M.S. '73) is employed at Bellwether Exploration Company in Houston, Texas.

Donald D. Fullmer II ('71) is project manager with Worley International Inc. in Houston, Texas.

Whitney "Zeke" J. Zeringue, Jr. ('71) is retired from Input/Output and resides in Missouri City, Texas.

Pipeline would like to extend its condolences to the family of **Majid I. Thalji** ('73) who passed away on June 13, 1998. He is survived by his wife, Joselle, one son, Ryan, and one daughter, Amy. He was employed by Halliburton Energy Services at the time of his death.

George Fulco ('74) is a reservoir engineer at Devon Energy Corp. in Oklahoma City, Oklahoma.

David Alwell ('75) is vice president of operations at Chalmers, Collins & Alwell, Inc. in Lafayette, Louisiana.

Michael C. Collins ('75) is president, engineering manager and partner of Chalmers, Collins, & Alwell, Inc. in Lafayette, Louisiana.

Jeffrey Wade French ('76) is an electric test technician for Electro-Test, Inc. in Natchitoches, Louisiana.

Galo Arevalo (M.S. '77) lives in Quito, Ecuador. He is employed by Petro-Ecuador.

Clarence G. "Porky" Curtis ('77) passed away on November 15, 1998, in Shreveport, Louisiana, from heart illness. Our condolences to his family.

Alvin Landry ('77) is operations manager with Chevron Overseas - Alba Field. He has recently moved to Aberdeen, Scotland, with his family.

Bob E. Pettitt, Jr. ('77) is president of Levert & Pettitt, Inc., an engineering consulting firm in Shreveport, Louisiana.

Pablo Manrique ('78) is a professional engineer with PDVSA INTEVEP in Caracas, Venezuela.

M. Mark Harbison ('79) is vice president of Goodyear Capital Corp. in New Orleans, Louisiana.

William "Bill" D. Hunter ('79) is a petroleum engineering supervisor for Chevron's Oklahoma and South Texas operations. He resides in Richmond, Texas.

1980s

Paul Arceneaux ('80) is working for Halliburton Energy Services in Lafayette, Louisiana.

Al Diaz ('80) is a senior advising production engineer with Unocal/Thailand. He has been living in Bangkok for over four years with his wife, Ruth, and children, Ray (14) and Phil (11).

Bruce F. Avedon ('81) is a drilling engineer with Louis Dreyfus Natural Gas, Gulf Coast Division, Houston, Texas.

David S. Dawson ('81) has moved back to the States from Scotland and is working for Chevron Overseas Petroleum, Inc. in San Ramon, California.

M. Barton Landry ('82) is a production engineer with Aera Energy, LLC in Long Beach, California.

Allen C. Louvierre, Jr. ('82) works for Texaco and lives in Aberdeen Scotland.

John A. Peyton ('83) works for ECT Producer Finance and Services, a division of Enron's Energy Finance Group, in Houston, Texas.

Alumni Bits

James I. Platt ('83) recently was promoted by Security DBS to area business manager for Mid-Continent Business Unit located in Oklahoma City, Oklahoma.

Catherine D. Belanger ('84) is consulting for Exxon in New Orleans, Louisiana. She and her husband, *W. Louis Belanger, Jr.*, ('84) have two daughters and a son.

Steve McDaniel ('84) is director of investment banking at Merrill Lynch in Houston, Texas.

Bruce A. Smith (B.S. '84; M.S. '87) is a senior petroleum engineer with Key Production Co. in New Orleans, Louisiana

Chris Van Way ('84) is president of J.P. Oil Co., an independent oil company. He was recently named "Operator of the Year" by California Bureau of Land Management. He and his wife, Angie, have five children and reside in Lafayette, Louisiana.

Wayne S. Finger ('85) is a district manager for Schlumberger in Opelousas, Louisiana. He has held various positions in the Gulf of Mexico, Bombay, India, Tokyo, and Austin and Abilene, Texas, with Schlumberger since graduating.

Mustafa "Mark" Hacıislamoglu (M.S. '85; Ph.D. '89), works for Drilling Measurement in Houston, Texas.

Mark A. Mayfield ('85) is supervisor of midstream optimization with Unocal in Sugar Land, Texas.

Susan J. Simons ('85) is a surveillance operations engineer for Aera Energy (a joint venture of Shell and Mobil.) She is married and living in Santa Barbara, California.

Thomas L. Smith ('85) is vice president and general manager of Advanced Mobile Storage in San Antonio, Texas.

Alfred J. Thomas III ('85) is an engineering manager with American Explorer in Lafayette, Louisiana.

Turhan Yildiz (M.S. '85, Ph.D. '89) is an assistant professor at the University of Tulsa.

Charles J. "Charlie" Burland ('86) is owner and general partner of Gregory's Snack Bar, a family restaurant business, after leaving the U.S. EPA-Region IV in Atlanta in 1994. He graduated in December 1997 with a masters degree in public administration from Georgia State University with honors.

Pablo A. Gomez ('86) recently moved from Bogota, Colombia, to Buenos Aires, Argentina, to take a reservoir engineering position with Petroleum Argentina San Jorge. He and his wife have one child.

Alton R. Perry III ('87) is a senior production engineer with Basin Exploration in Houston, Texas.

David A. Williams ('87) is a lead petroleum engineer with Chevron Overseas Petroleum, Inc. in Cabinda, Angola.

Henry Leigh ('88) is currently working for B.J. Services International in Maturin, Venezuela. He is a district engineer in charge of the Stimulation Department.

Otto Luiz Alcantara Santos ('89) is a petroleum engineer with Petrobras in Salvador, Brazil.

Steve Bell ('89) is the marketing communications and knowledge manager of global energy and mining of Pricewaterhouse Coopers LLP in Houston, Texas.

1990s
Hui Xu (Ph.D. '90) is now a senior engineer working on the GeoFrame software system at Schlumberger in Austin, Texas.

Ken L. Fitzgerald ('92), works for Evans-Hamilton, oceanographic consultants in Seattle, Washington.

Mark Holliday ('92) and family have moved to Neuquen, Argentina, where he works for the Alberta Energy Company International as the drilling, completion, and workover superintendent in Argentina.

Adel Ibrahim (Ph.D. '93), is an associate professor at Cairo University, while his wife, **Fatma Karim** (M.S. '92), works for Schlumberger. They have two children, Karim, eight, and Abla, four.

Jose Da Graca Luis ('93), is working as a production engineer with Texaco Panama, Inc. in Angola, West Africa.

Ulrich R. Oosthuizen ('93) is a petroleum engineer with Kuwait Oil Co. in Ahmadi, Kuwait.

Bryan N. Batson ('95) lives in Jackson, Mississippi. He has passed the first step of his boards and is in his third year of medical school at the University of Mississippi Medical Center. He is currently getting to apply Bernoulli's Principle and LaPlace's Law to vascular surgery.

Rachel (Kernion) LeFlore ('95) is a petroleum engineer at Texaco E & P in New Orleans, Louisiana. She is married to Max LeFlore, who works for Schlumberger Wireline and Testing. They have one son, Robert Coi Greenwood, born September 1998.

Wojtek Manowski (M.S. '97) resides in Poland.

Richard Duncan (M.S. '98) passed away April 8, 1999. He was employed by PI/Dwights at the time of his death.

Basil Elzein ('98) works for the Louisiana Department of Natural Resources in Baton Rouge, Louisiana.

Luis Figueiredo ('98) is working for Chevron CABGOC.

Khalid Halabi ('98) is a petroleum engineer for Chevron in Houston, Texas. He plans to pursue an M.B.A in management from the Houston Baptist University.

Pipeline is published annually by the Craft and Hawkins Department of Petroleum Engineering, Louisiana State University, CEBA 3516, Baton Rouge, Louisiana 70803. Telephone: (225) 388-5215, FAX: (225) 388-6039, e-mail: pejde@lsu.edu. Jan Easley, *Producer.*



Louisiana State University
Craft & Hawkins Department of
Petroleum Engineering
3516 CEBA
Baton Rouge, LA 70803

Non-profit Org.
U.S. Postage
PAID
Permit No: 733
Baton Rouge, LA